

## MINI LED PROJECTOR FOR SWIMMING POOL – COLOR LIGHTING

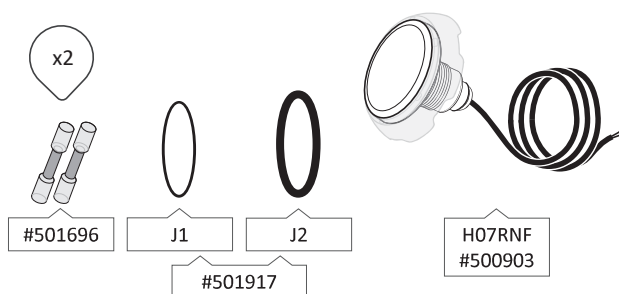


Model : **500866**  
Type : 36 LED 2835 / 120°  
Color : 12R, 12G, 12B  
Control : On/Off  
Functions : 11 static colors et 5 programs  
Material : Polycarbonate (PC)  
1,5'' thread to screw in vacuum fitting  
Wire connection : 2 screw terminals  
2 meters HO7RNF wire 2x1,5mm²  
HS code : 9405403990  
Bar code : 3700450500866

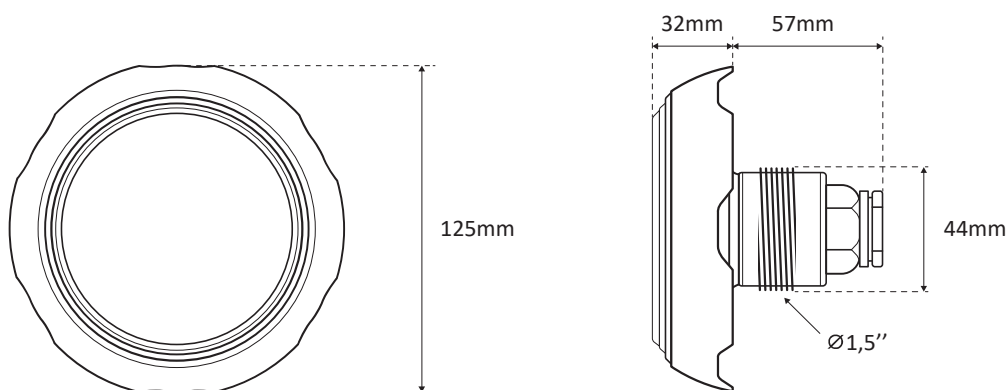
### Option :

- Above ground pool installation kit (#501009)
- Inground pool installation kit (#501368)

### CONTENUS DE L'EMBALLAGE



### DIMENSIONS



### PACKING

Part Number	Box	Weight	Size	Carton	Weight	Size	Pallet	Weight	Size
500866	1U	0,56kg	15x15x15cm	6U	4kg	47x32x16cm	540U	370kg	100x120x167cm

## PHOTOMETRY

Ra (IRC) : N/A

Beam angle : 120°

Nominal luminous flux : 270 lumens max.

Extractable light source : MPLRGB-LED

Light source energy class : N/A

This swimming pool luminaire contains an extractable LED light source with color change not concerned by the EU2019/2015 and 2019/2020 regulations.

## ELECTRICAL PARAMETERS

Instant power max : 7W

Input voltage : ~12V(AC) 50/60Hz or =20V(DC)

PF max : 0,65 if ~12V(AC)

PF max : 1 if =20V(DC)

Mini power supply with ~12V(AC) [(Pi / PF)+20%] : 13VA

Electric class : III

IP68  
1,0m

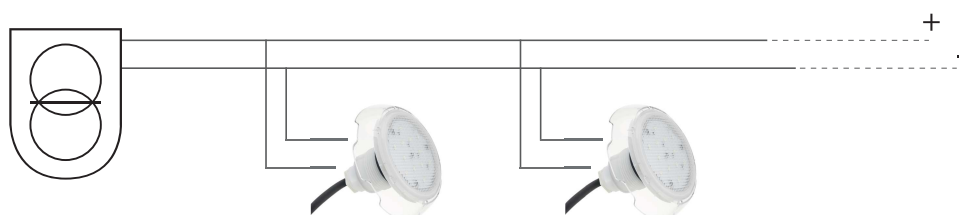


Hg  
00mg

**CLASS III** ~12V(AC)  
=20V(DC)

## CONNECTION

Use a 2 x 1mm<sup>2</sup> minimum cross section of connecting cable, to adapt according to the distance between the junction box of the projector and the transformer well as the power input.



USE ONLY WITH A SAFETY TRANSFORMER / DO NOT PLUG IN SERIES /  
PROTECT THE CONNECTOR WITH INSULATING GEL

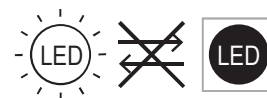
## OTHER PARAMETERS

Protection index : IP68

LED life span : 15 000h

On/Off cycles : > 100 000

Use : This pool light is designed for use in permanent immersion in water with a IP68 waterproof rating. The spin welding assembly process of the optical part with its support, does not allow its reparability. The light source is not replaceable and in case of failure, it is necessary change all the luminaire.



## CERTIFICATION

EMC 2014/30/EU Directive.

EN60598-1 / EN60598-2-18 Norm in all its modifications.

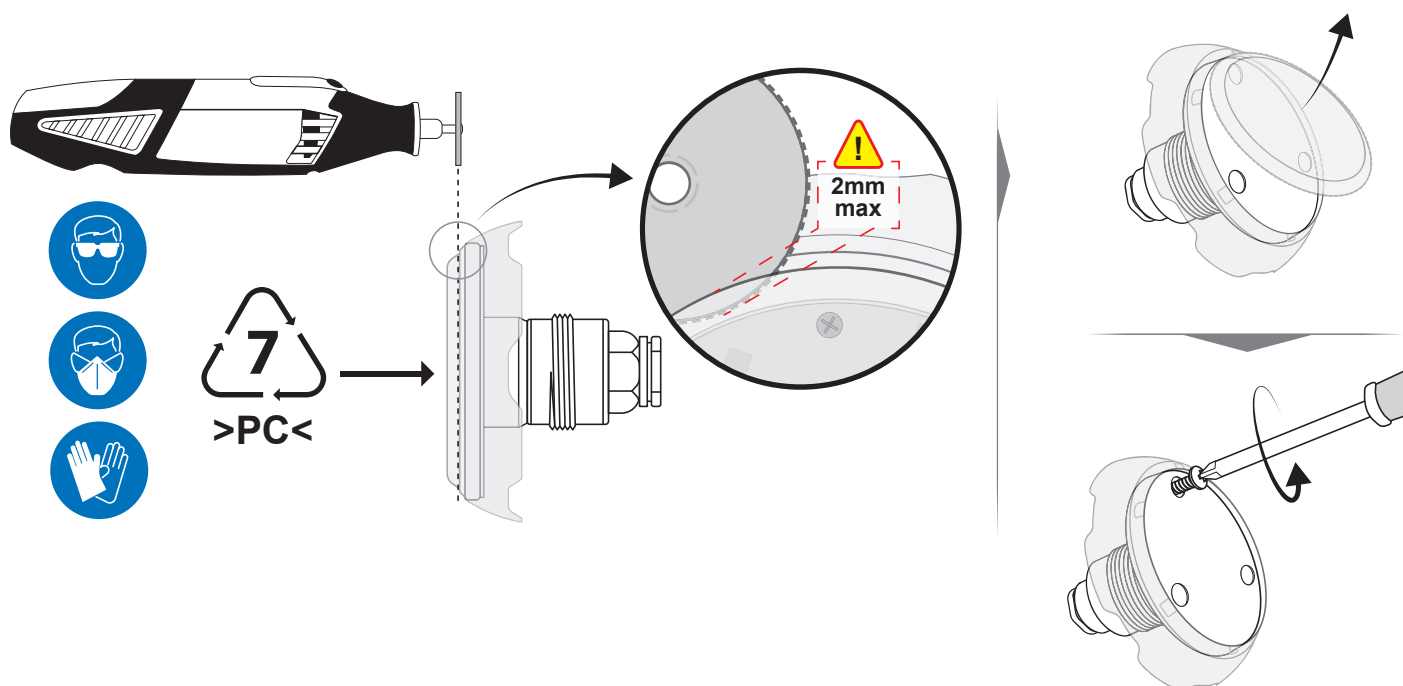


RoHS  
COMPLIANT

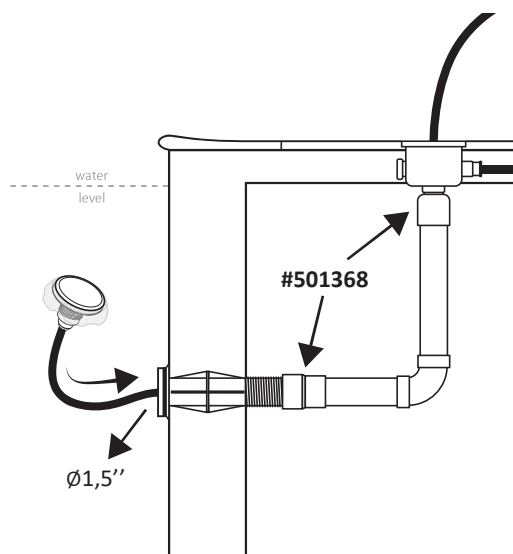
REACH  
COMPLIANT

### VARIOUS

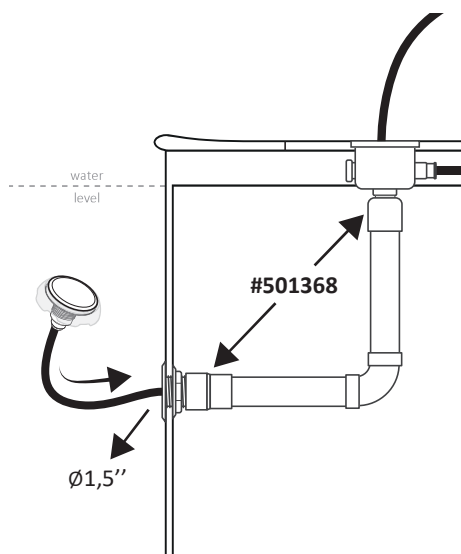
To extract the light source, please follow the instructions below :



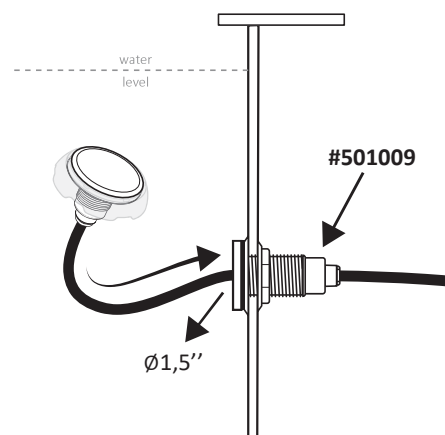
### PRINCIPLE OF INSTALLATION



Example for inground pool with liner



Example for inground pool polyester



Example for above-ground pool

For more information, see the product leaflet