

PAR56 ECOPROOF LED LAMP FOR SWIMMING POOL – WHITE LIGHTING



Model : **502655**

Type : 60 LED 3528 / 120°

Colour : cold white 6500K

Control : On/Off

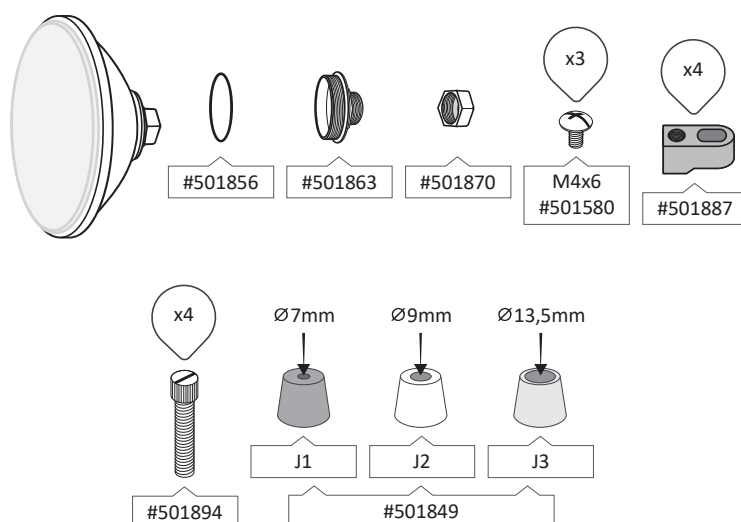
Material: lens, cup and nut in Polycarbonate (PC). Gland in nylon (PA)

Wire connection : 2 screw terminals

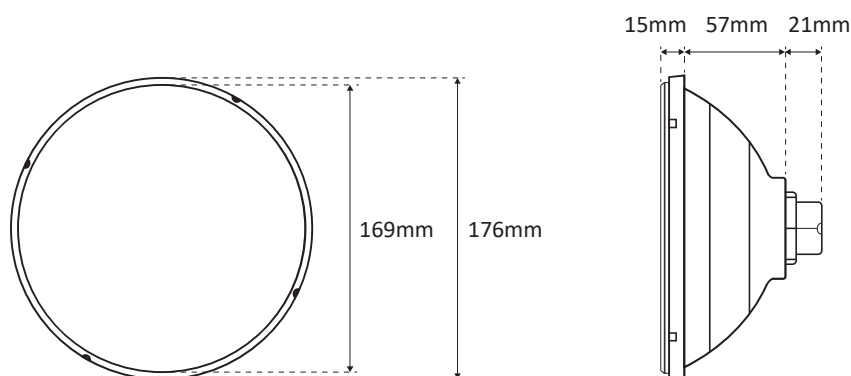
HS code : 9405403990

Bar code : 3700450502655

CONTENTS OF THE PACKAGING



DIMENSIONS



CONDITIONNEMENT

| Ref. | Boite | Poids | Taille | Carton | Poids | Taille | Palette | Poids | Taille |
|--------|-------|--------|------------|--------|-------|------------|---------|--------|---------------|
| 502655 | 1U | 0,65kg | 17x17x17cm | 6U | 4,6kg | 53x36x18cm | 360U | 286 kg | 100x120x205cm |

PHOTOMETRY

Ra (IRC) : 85

Beam angle : 120°

Nominal luminous flux : 1450 lumens max.

Extractable light source : ALP01

Light source energy class : D

This swimming pool luminaire contains an extractable LED light source of type ALP01 and energy class (D)



ELECTRICAL PARAMETERS

Instant power max : 13W

Input voltage : ~12V(AC) 50/60Hz or ~20V(DC)

PF max : 0,7 if ~12V(AC)

PF max : 1 if ~20V(DC)

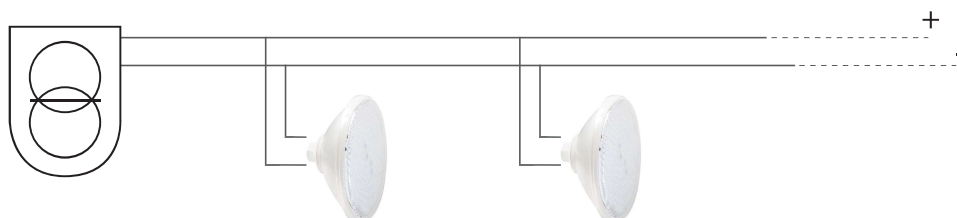
Mini power supply ~12V(AC) [(Pi / PF)+20%] : 23VA

Electrical Class : III


CLASS III ~12V(AC)
~20V(DC)

CONNECTION

Use a 2 x 1mm² minimum cross section of connecting cable, to adapt according to the distance between the junction box of the projector and the transformer well as the power input.


 ~12V(AC)
or ~20V(DC)

USE ONLY WITH A SAFETY TRANSFORMER / DO NOT PLUG IN SERIES /
PROTECT THE CONNECTOR WITH INSULATING GEL

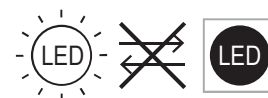
OTHER PARAMETERS

Protection index : IP68

LED life span : > 10 000h

On/Off cycles : > 100 000

Use : This pool light is designed for use in permanent immersion in water with a IP68 waterproof rating. The spin welding assembly process of the optical part with its support, does not allow its repairability. The light source is not replaceable and in case of failure, it is necessary change all the luminaire.



CERTIFICATION

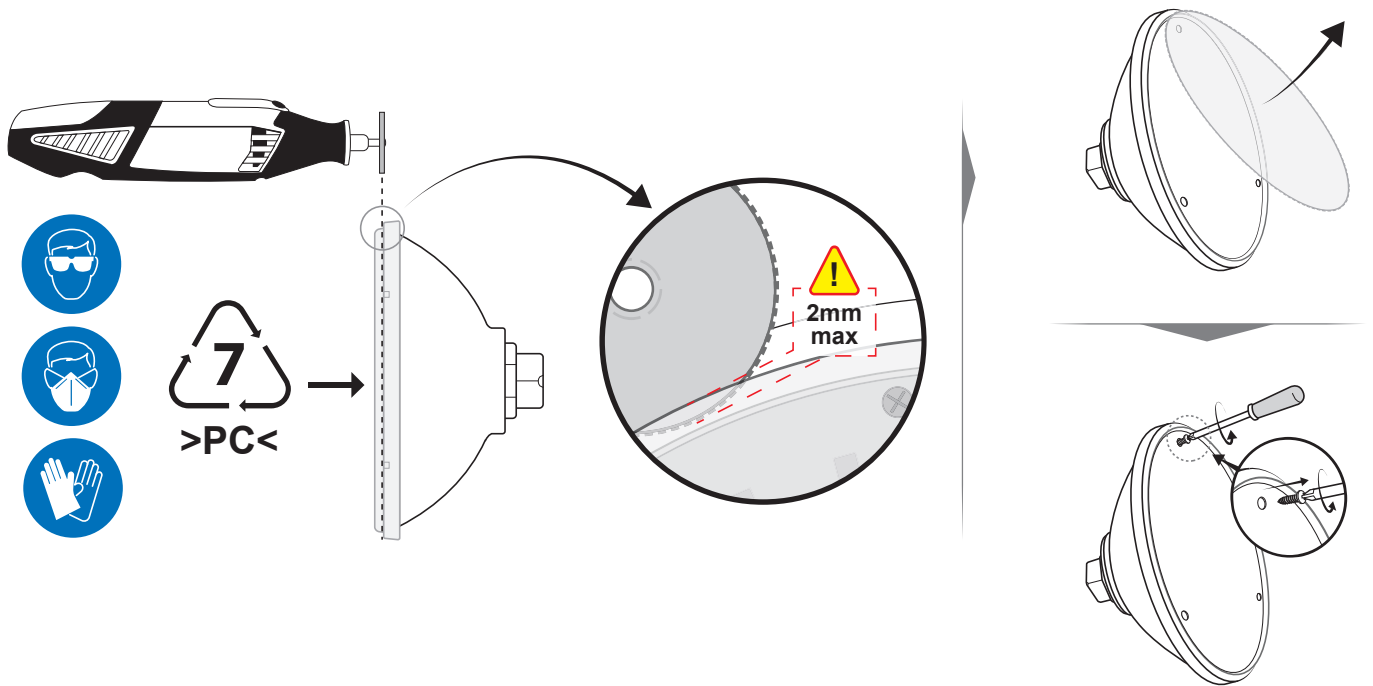
EMC 2014/30/EU Directive.

EN60598-1 / EN60598-2-18 Norm in all its modifications.

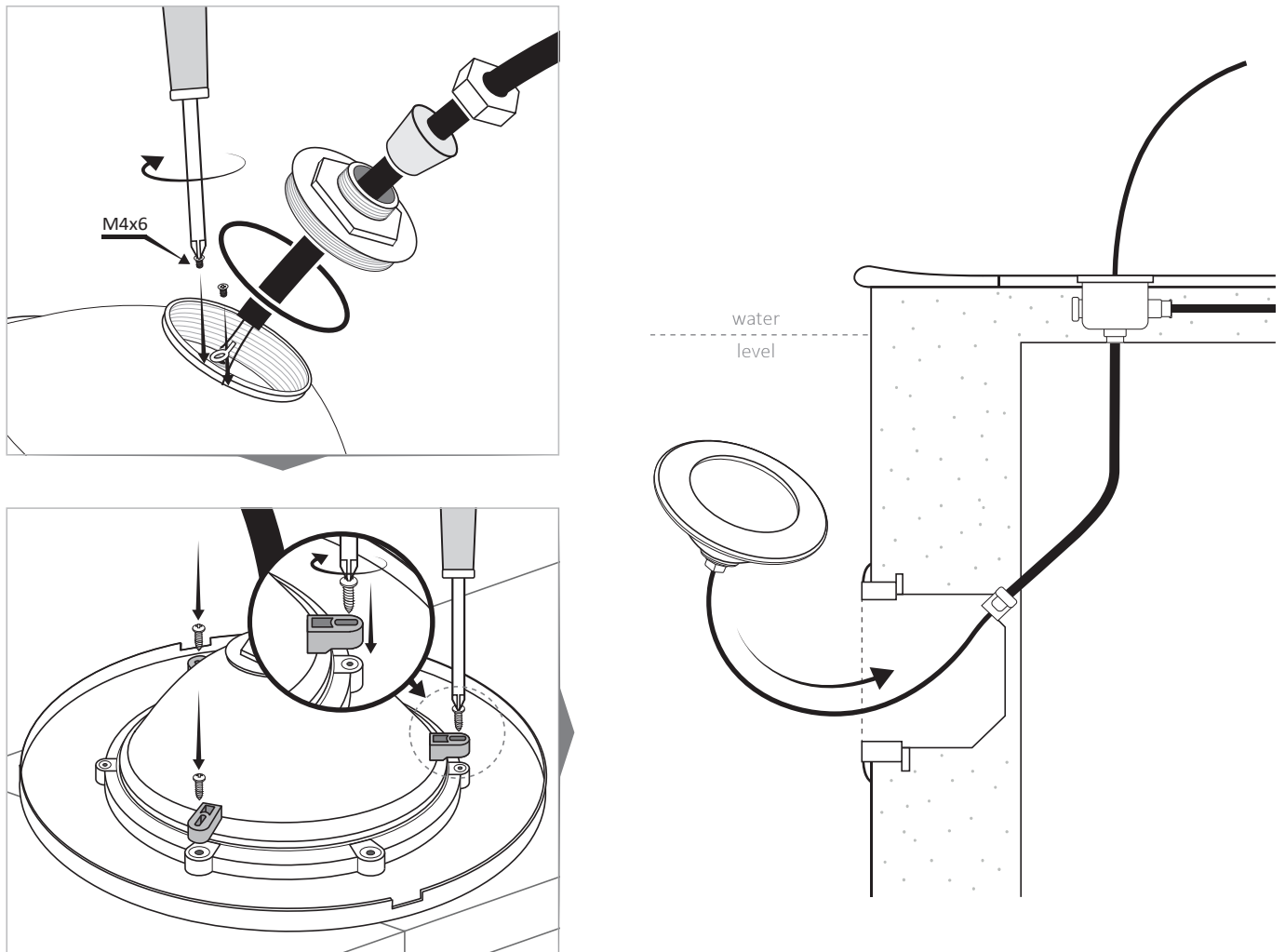


VARIOUS

To extract the light source, please follow the instructions below :



PRINCIPLE OF INSTALLATION



For more information, see the product leaflet